

BIRGIT

Combinación de datos que tienen diferentes niveles de detalle
Mayo 2025



Cofinanciado por
la Unión Europea

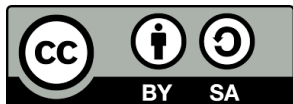
Combinación de datos que tienen diferentes niveles de detalle

vlado.cetl@unin.hr

sanja.samanovic@unin.hr

danko.markovinovic@unin.hr

olga.bjelotomic.orsulic@unin.hr

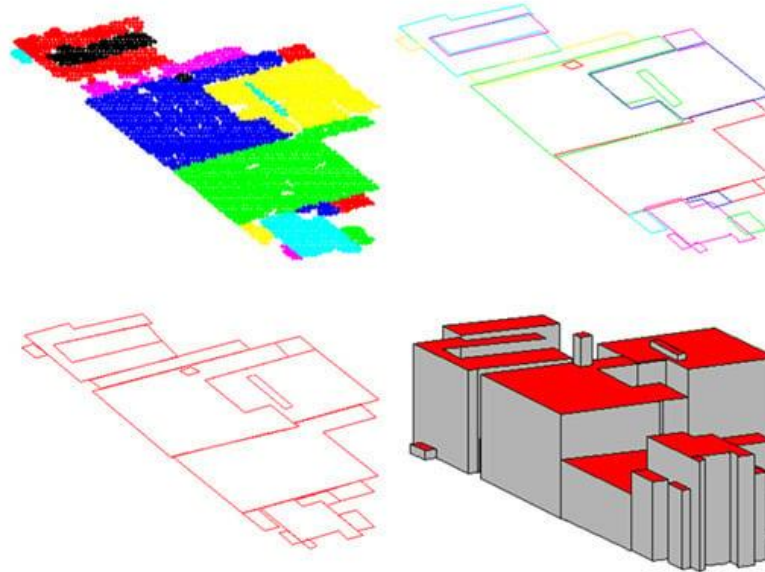


Resultados de aprendizaje

- Al final de este módulo, se espera que el participante sea capaz de:
 - Combinar datos geoespaciales 3D con diferentes tipos de geometría
 - Interpretar diferentes niveles de detalle (LOD)

El objetivo es combinar y visualizar diferentes fuentes de datos

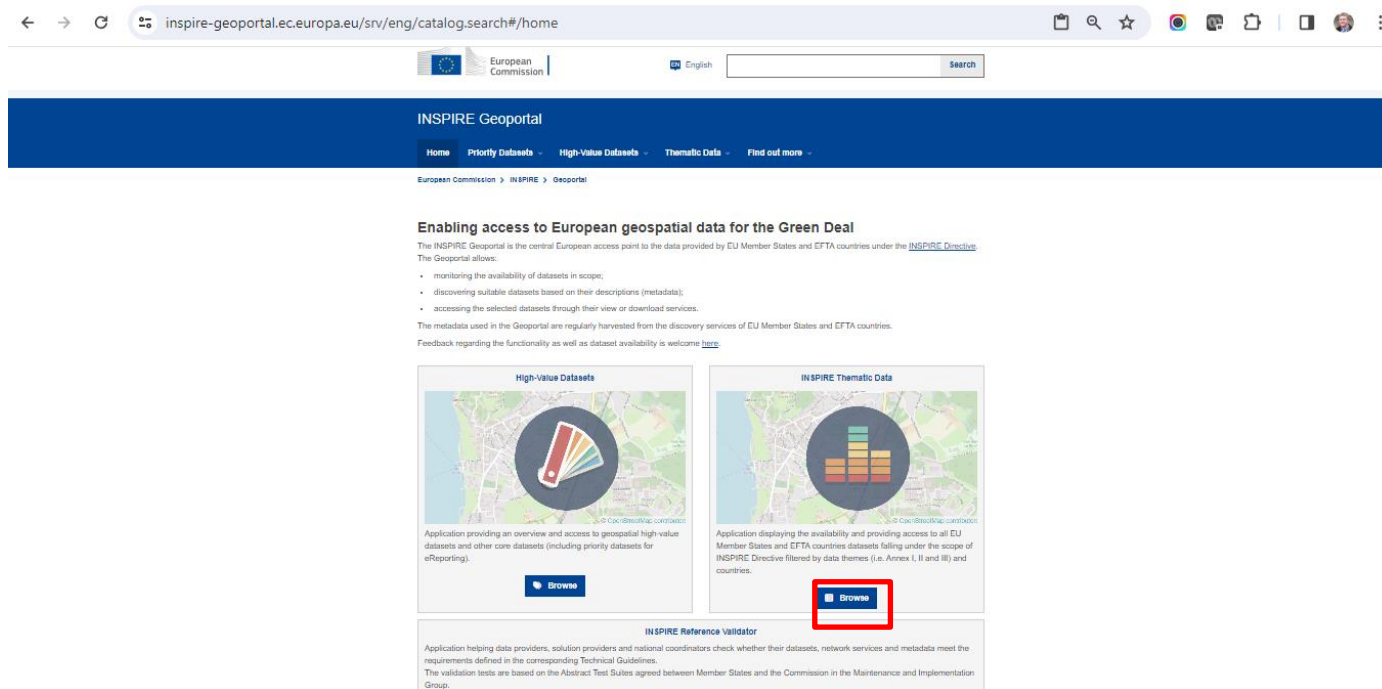
Diferentes geometrías y diferentes niveles de detalle (es decir, LOD0 y LOD1)



- Fuentes de datos
- WMS, WFS, ATOM-Feed, APIs
- Interoperabilidad
- La interoperabilidad de datos espaciales es la capacidad de diferentes sistemas, formatos y estándares para intercambiar y utilizar datos espaciales de manera efectiva





- Fuentes de datos(1)



The screenshot shows the INSPIRE Geoportal website. At the top, there is a navigation bar with the European Commission logo, a language selector set to 'English', and a search bar. Below this is a blue header with the text 'INSPIRE Geoportal' and a navigation menu with links: 'Home', 'Priority Datasets', 'High-Value Datasets', 'Thematic Data', and 'Find out more'. The main content area has a heading 'Enabling access to European geospatial data for the Green Deal' followed by a paragraph explaining the portal's purpose and a list of features. Below this are three cards: 'High-Value Datasets', 'INSPIRE Thematic Data', and 'INSPIRE Reference Validator'. The 'INSPIRE Thematic Data' card has a red box around its 'Browse' button.

← → ↺ inspire-geoportal.ec.europa.eu/srv/eng/catalog.search#/home 📅 🔍 ☆ 🌈 🗺️ 📄 📱 👤 ⋮

 European Commission |  English

INSPIRE Geoportal

[Home](#) [Priority Datasets](#) [High-Value Datasets](#) [Thematic Data](#) [Find out more](#)

[European Commission](#) > [INSPIRE](#) > [Geoportal](#)

Enabling access to European geospatial data for the Green Deal

The INSPIRE Geoportal is the central European access point to the data provided by EU Member States and EFTA countries under the [INSPIRE Directive](#).


The Geoportal allows:

- monitoring the availability of datasets in scope;
- discovering suitable datasets based on their descriptions (metadata);
- accessing the selected datasets through their view or download services.

The metadata used in the Geoportal are regularly harvested from the discovery services of EU Member States and EFTA countries.


Feedback regarding the functionality as well as dataset availability is welcome [here](#).

High-Value Datasets



Application providing an overview and access to geospatial high value datasets and other core datasets (including priority datasets for eReporting).

INSPIRE Thematic Data



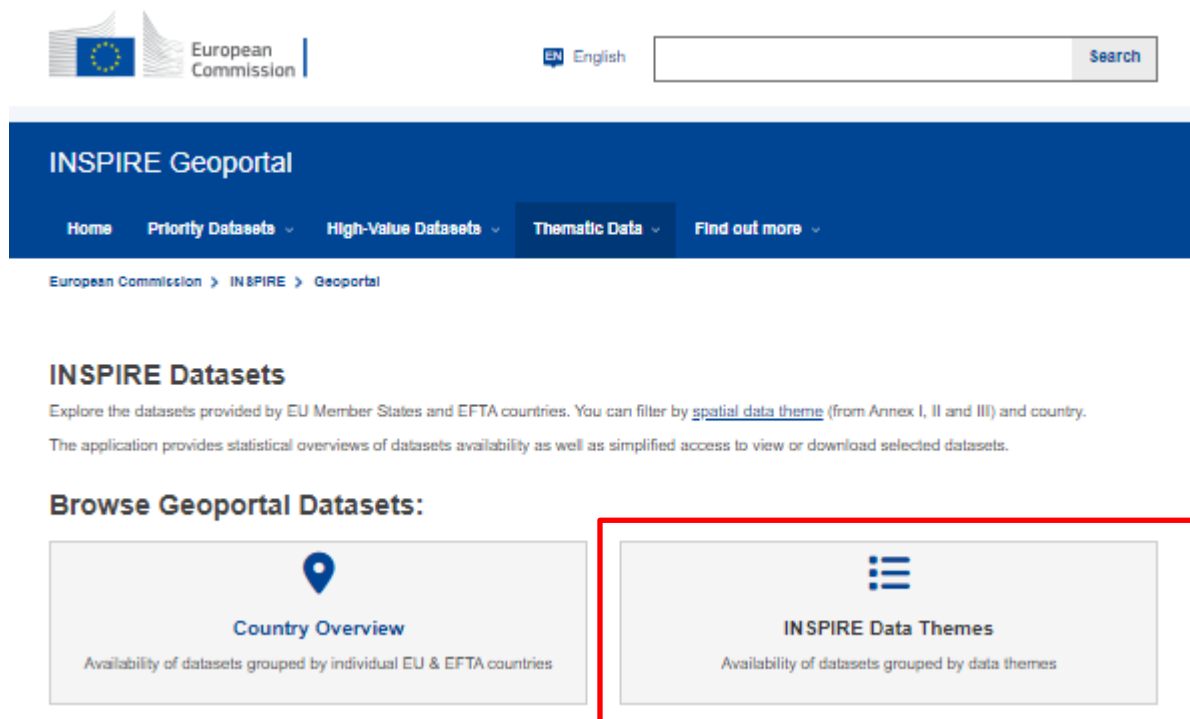
Application displaying the availability and providing access to all EU Member States and EFTA countries datasets falling under the scope of INSPIRE Directive filtered by data themes (i.e. Annex I, II and III) and countries.

INSPIRE Reference Validator

Application helping data providers, solution providers and national coordinators check whether their datasets, network services and metadata meet the requirements defined in the corresponding Technical Guidelines.

The validation tests are based on the Abstract Test Suites agreed between Member States and the Commission in the Maintenance and Implementation Group.

- Fuentes de datos (1)



The screenshot shows the INSPIRE Geoportal website. At the top, there is a header with the European Commission logo, a language selector set to 'EN English', and a search bar. Below the header is a blue navigation bar with the title 'INSPIRE Geoportal' and several menu items: 'Home', 'Priority Datasets', 'High-Value Datasets', 'Thematic Data', and 'Find out more'. A breadcrumb trail below the navigation bar reads 'European Commission > INSPIRE > Geoportal'. The main content area is titled 'INSPIRE Datasets' and includes a paragraph explaining that users can explore datasets provided by EU Member States and EFTA countries, with filters for spatial data theme and country. It also mentions that the application provides statistical overviews and simplified access to view or download datasets. Under the heading 'Browse Geoportal Datasets:', there are two buttons. The first button, 'Country Overview', features a location pin icon and the text 'Availability of datasets grouped by individual EU & EFTA countries'. The second button, 'INSPIRE Data Themes', features a list icon and the text 'Availability of datasets grouped by data themes'. This second button is highlighted with a red rectangular border.

European Commission

EN English

Search

INSPIRE Geoportal

Home Priority Datasets High-Value Datasets Thematic Data Find out more


European Commission > INSPIRE > Geoportal

INSPIRE Datasets

Explore the datasets provided by EU Member States and EFTA countries. You can filter by [spatial data theme](#) (from Annex I, II and III) and country.


The application provides statistical overviews of datasets availability as well as simplified access to view or download selected datasets.

Browse Geoportal Datasets:



Country Overview

Availability of datasets grouped by individual EU & EFTA countries



INSPIRE Data Themes

Availability of datasets grouped by data themes

- Fuentes de datos(1)

INSPIRE Data Themes

Explore all Member States' datasets by selecting a data theme.

Annex I

 Addresses Def: <i>Location of properties based on address identifiers,...</i> 186 86 83	 Administrative units Def: <i>Units of administration, dividing areas where Member...</i> 613 108 211	 Cadastral parcels Def: <i>Areas defined by cadastral registers or equivalent....</i> 196 52 54	 Geographical grid systems Def: <i>Harmonised multi-resolution grid with a common point...</i> 127 12 11
 Geographical names Def: <i>Names of areas, regions, localities, cities, suburbs,...</i>	 Hydrography Def: <i>Hydrographic elements, including marine areas and all...</i>	 Protected sites Def: <i>Area designated or managed within a framework of international...</i>	 Coordinate reference systems Def: <i>Systems for uniquely referencing spatial information...</i>

- Fuentes de datos (1)



Geoportal Dataset Statistics

196
Metadata records

52
Downloadable Datasets

54
Viewable Datasets

Spatial scope coverage:

☐ National

☐ Regional

Select a country

Austria	5 4 2	Greece	1 1 1	Norway	3 1 3
Belgium	1 0 1	Hungary	1 1 1	Poland	1 0 1
Bulgaria	1 0 0	Iceland	2 0 0	Portugal	3 1 1
Croatia	1 0 1	Ireland	2 2 2	Romania	2 1 1
Cyprus	1 1 1	Italy	115 2 3	Slovakia	0 0 0
Czech Republic	2 2 2	Latvia	1 1 1	Slovenia	1 1 1
Denmark	1 1 1	Liechtenstein	2 1 2	Spain	3 3 3
Estonia					
Finland					
France					
Germany					

Title

Properties

Katastarske čestice i katastarske općine INSPIRE



- Fuentes de datos (1)

Katastarske čestice i katastarske općine INSPIRE

Metadata

Country: Croatia

+ Download Options

— View Options

Simple Viewer

Layer name

Service Metadata

Preview Dataset

CP.CadastralParcel

More Details

Preview Dataset

inspire-geoportal.ec.europa.eu says

Copied the url: https://api.uredjenazemlja.hr/services/inspire/cp_wms/ows?REQUEST=GetMap&SERVICE=WMS&VERSION=1.3.0&LAYERS=CP.CadastralZoning&FORMAT=image/png&CRS=EPSG:4326&BBOX=1.5646197848183165,2.302144192592216,2.607699641363861,3.836906987653693&HEIGHT=256&WIDTH=256&STYLES=

More Details

— Dataset Metadata

Resource Title

Katastarske čestice i katastarske općine INSPIRE

Resource Abstract

This is WMS URL

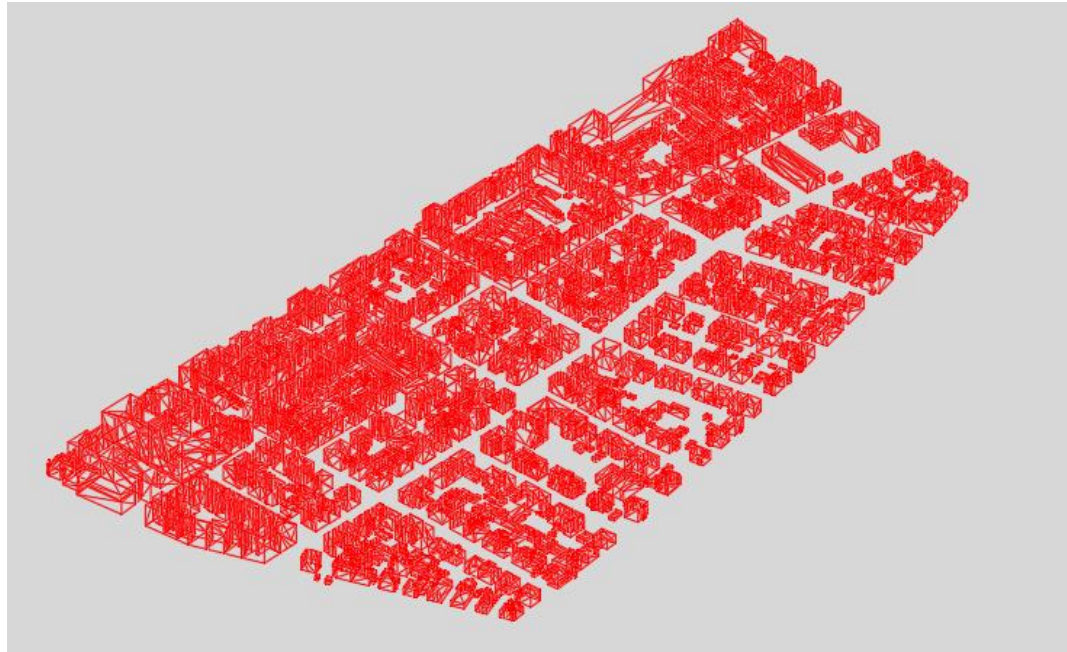
OK

Tags

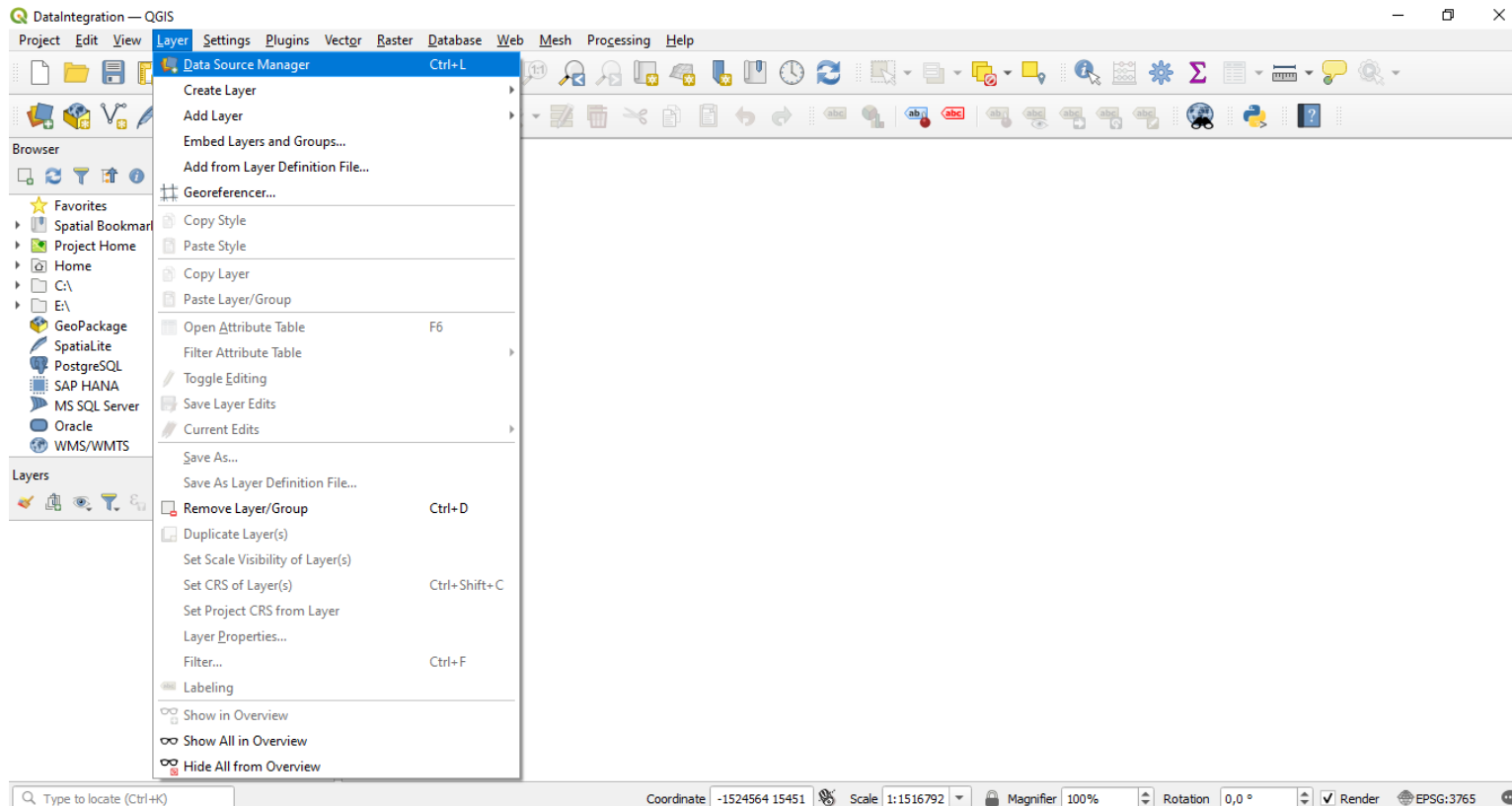
Priority Dataset

Spatial Scope

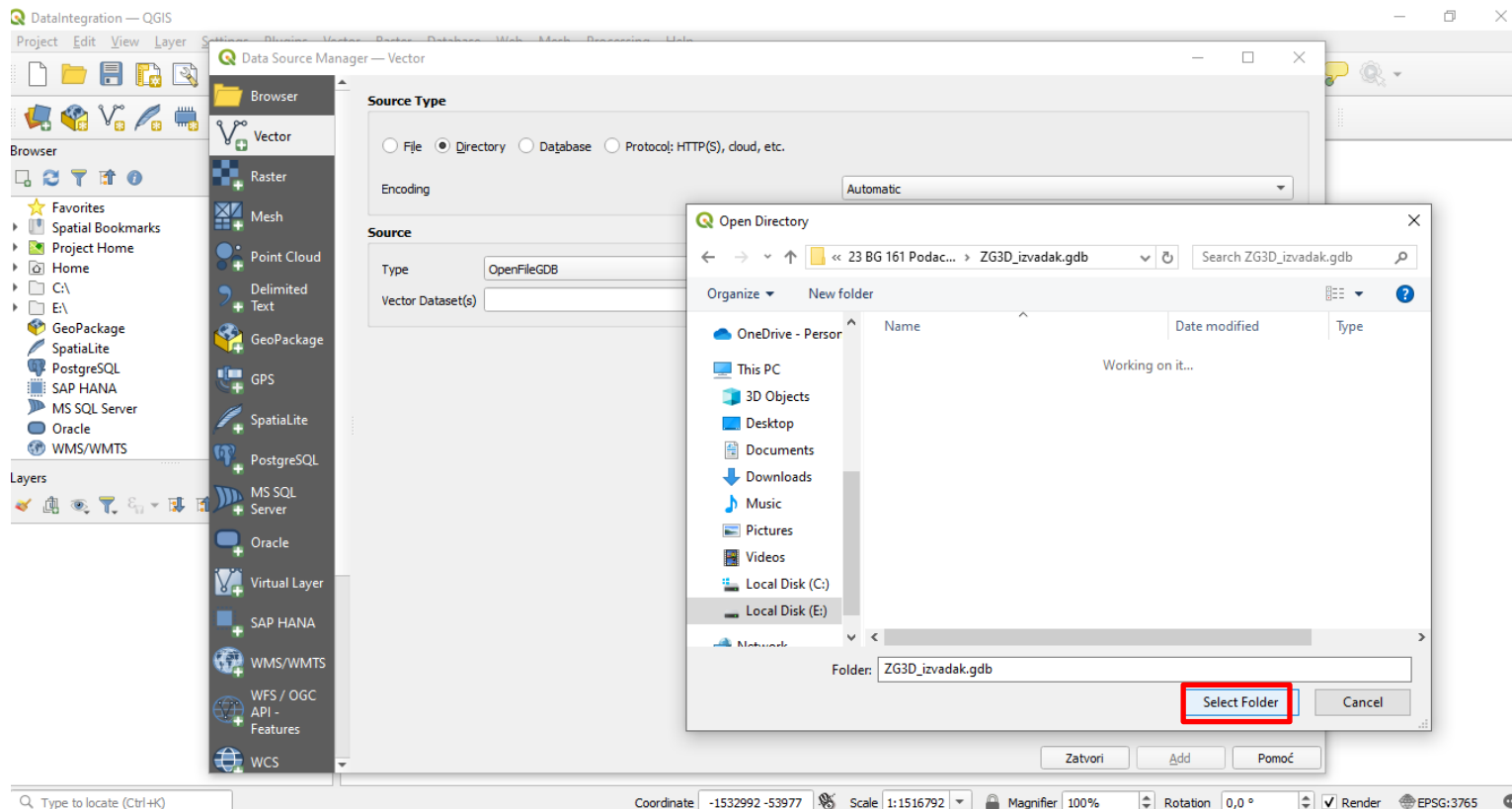
- Fuentes de datos (2)
- 3D Ciudad de Zagreb (parte de la ciudad)



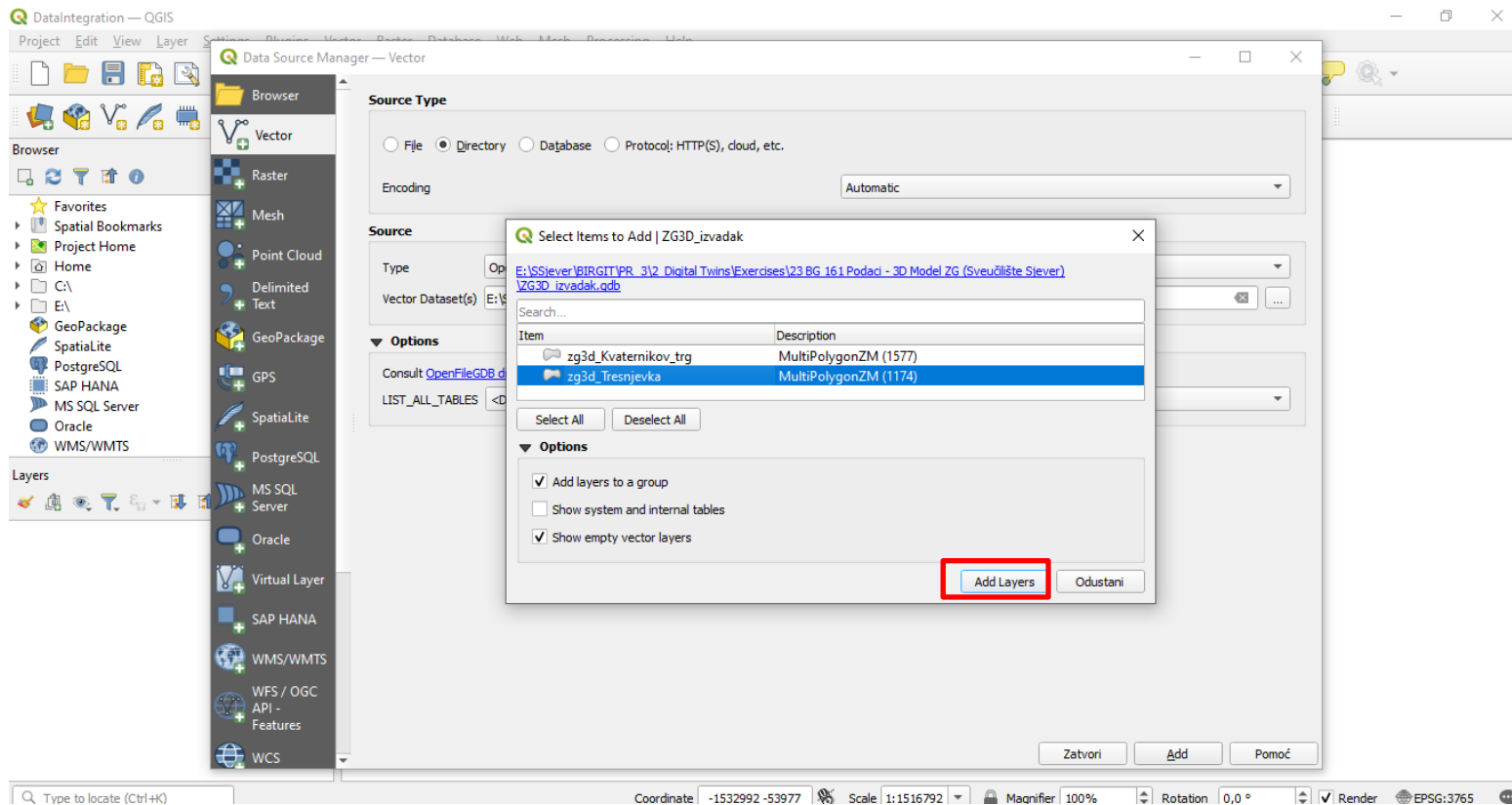
- Integración de datos (QGIS)



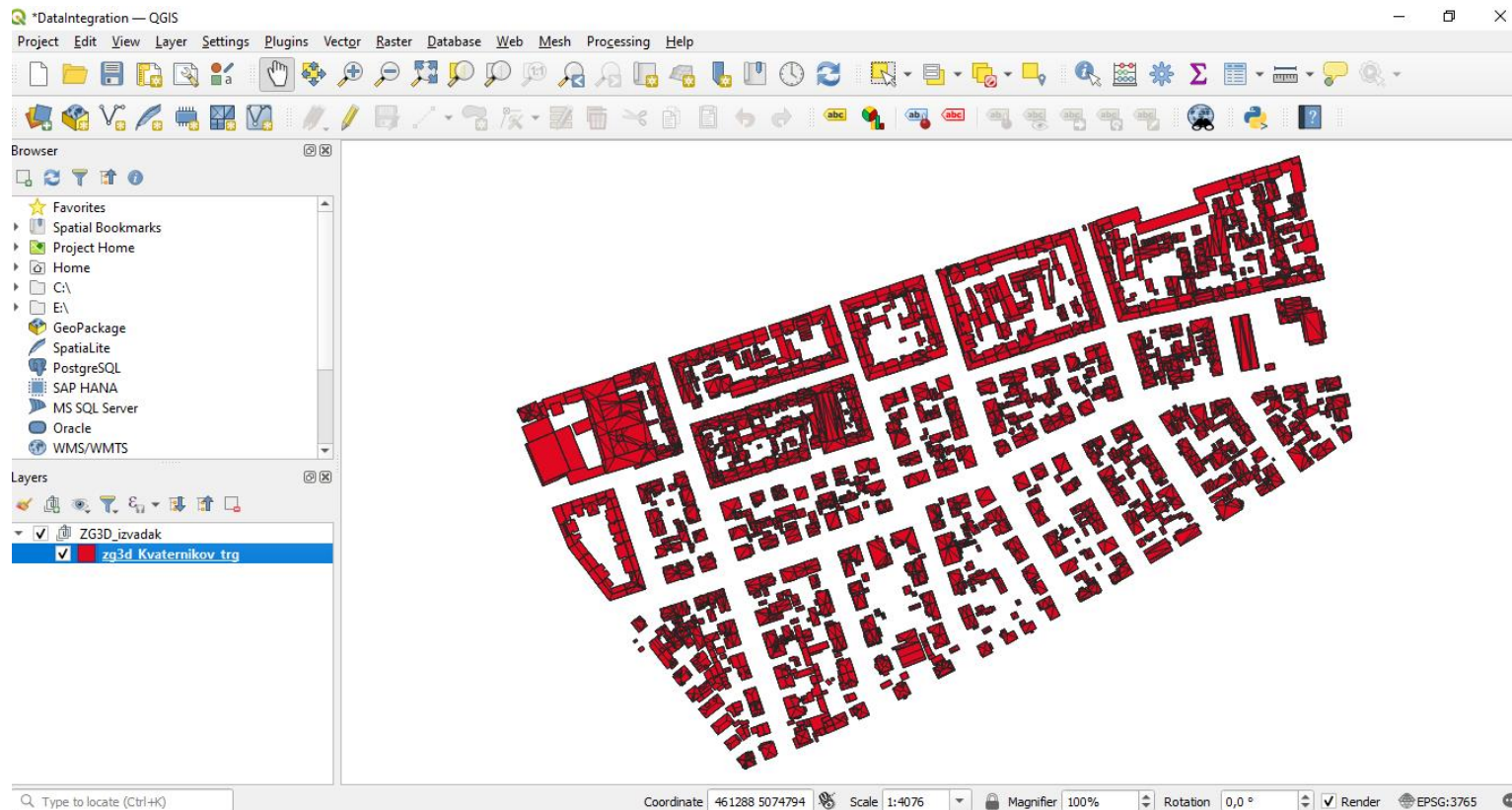
- Data Integration (QGIS)



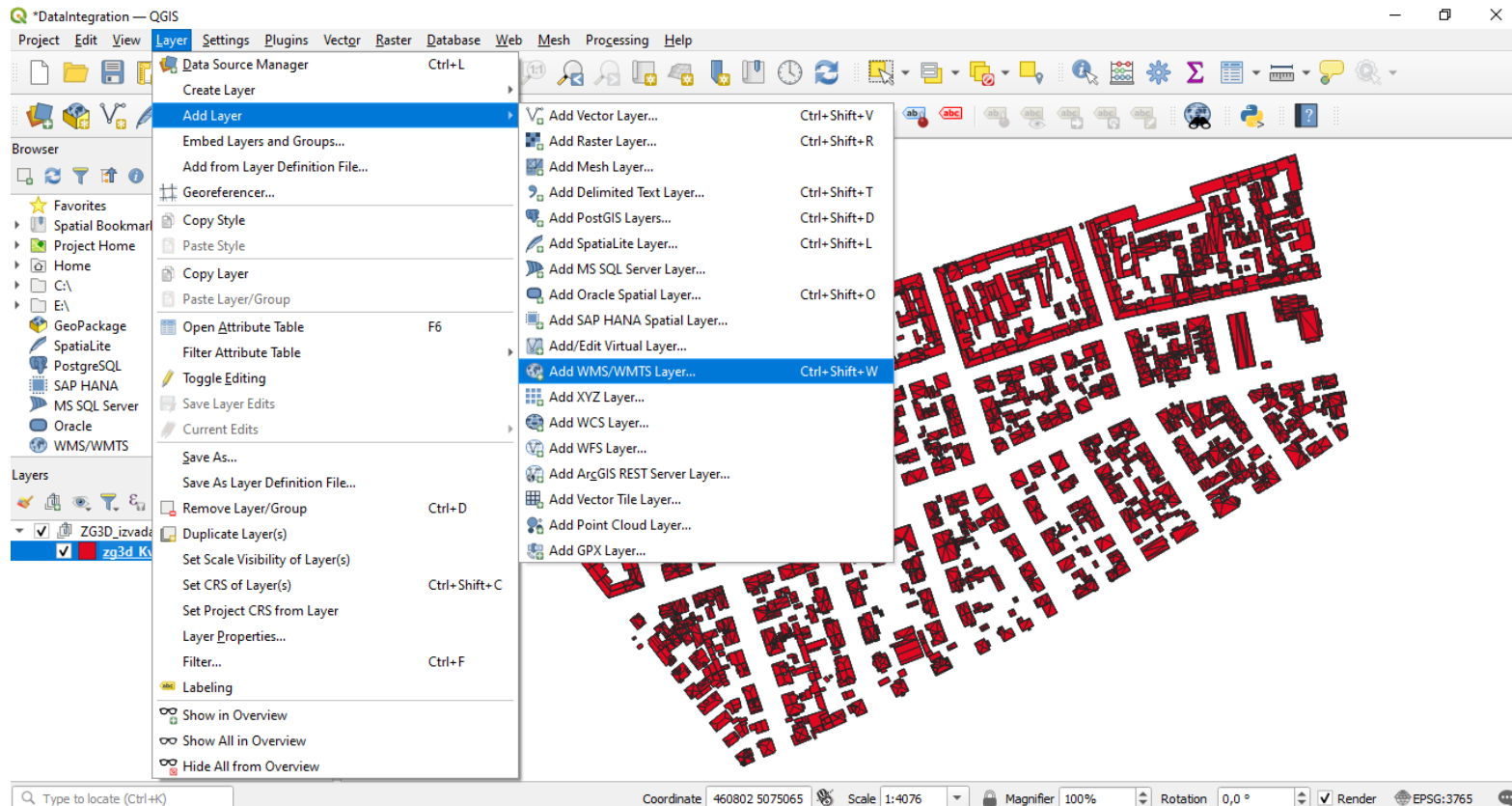
- Integración de datos (QGIS)



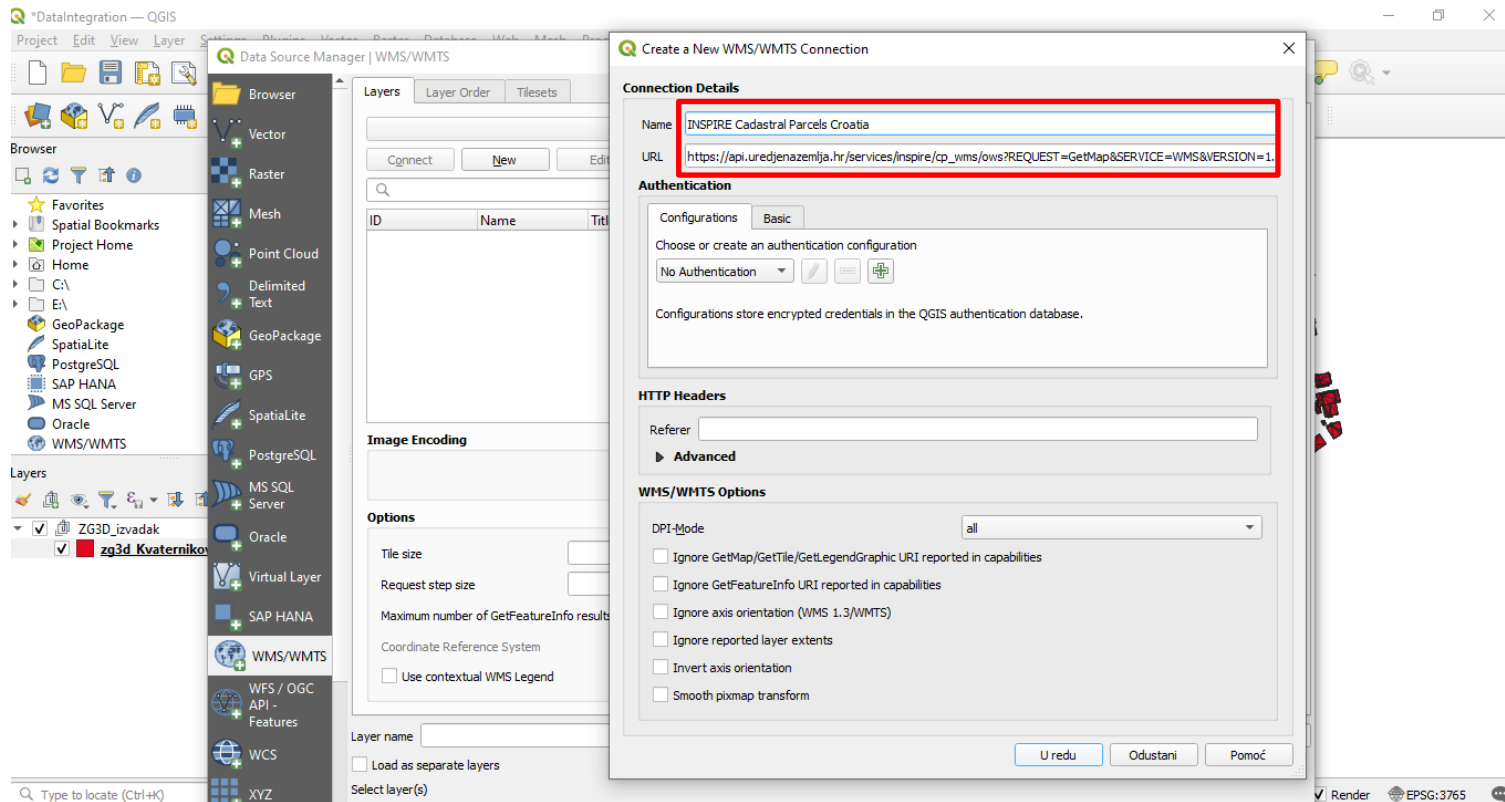
- Integración de datos (QGIS)



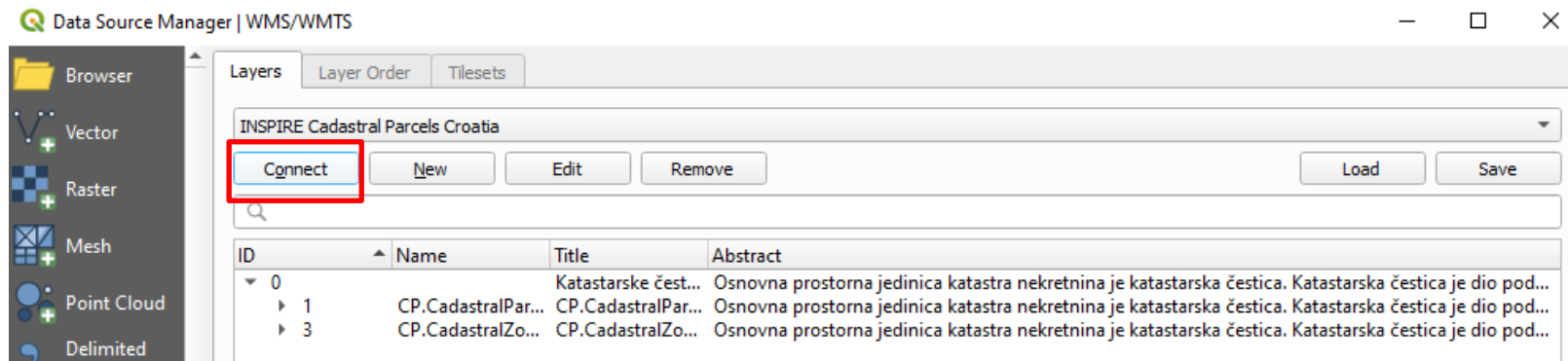
- Integración de datos (QGIS)



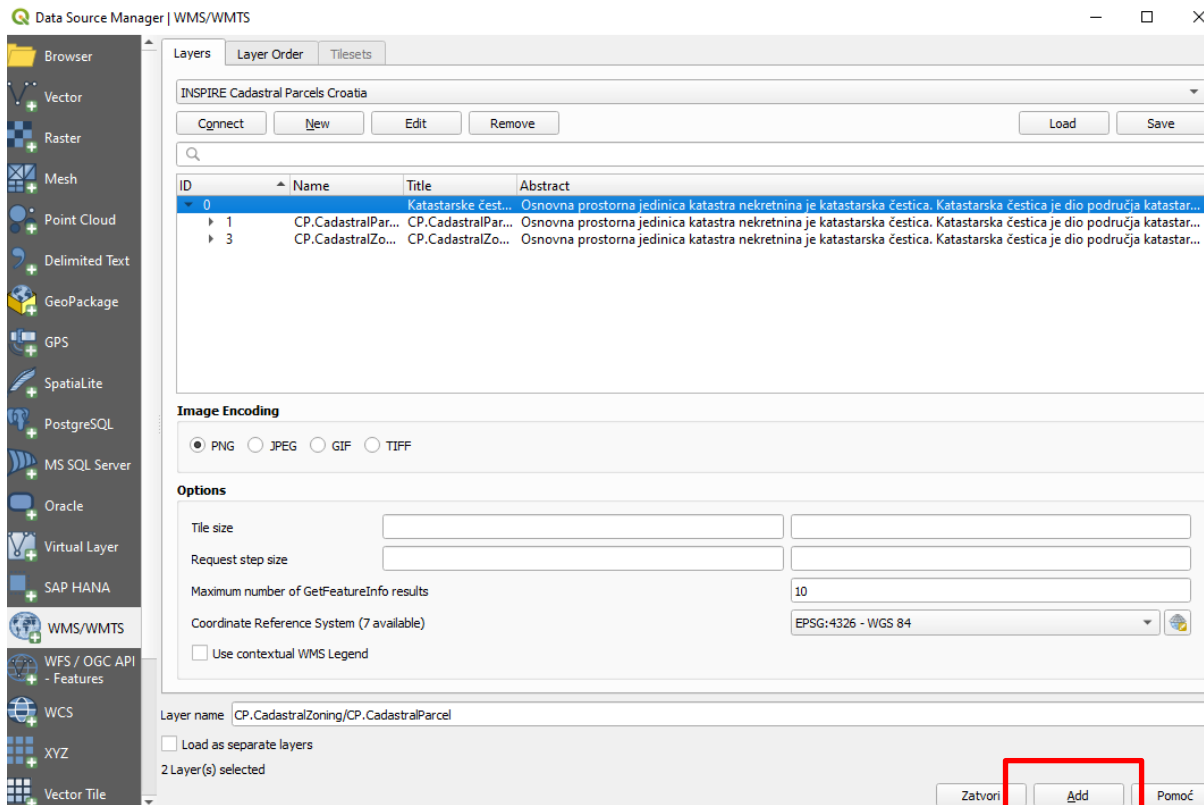
- Integración de datos (QGIS)



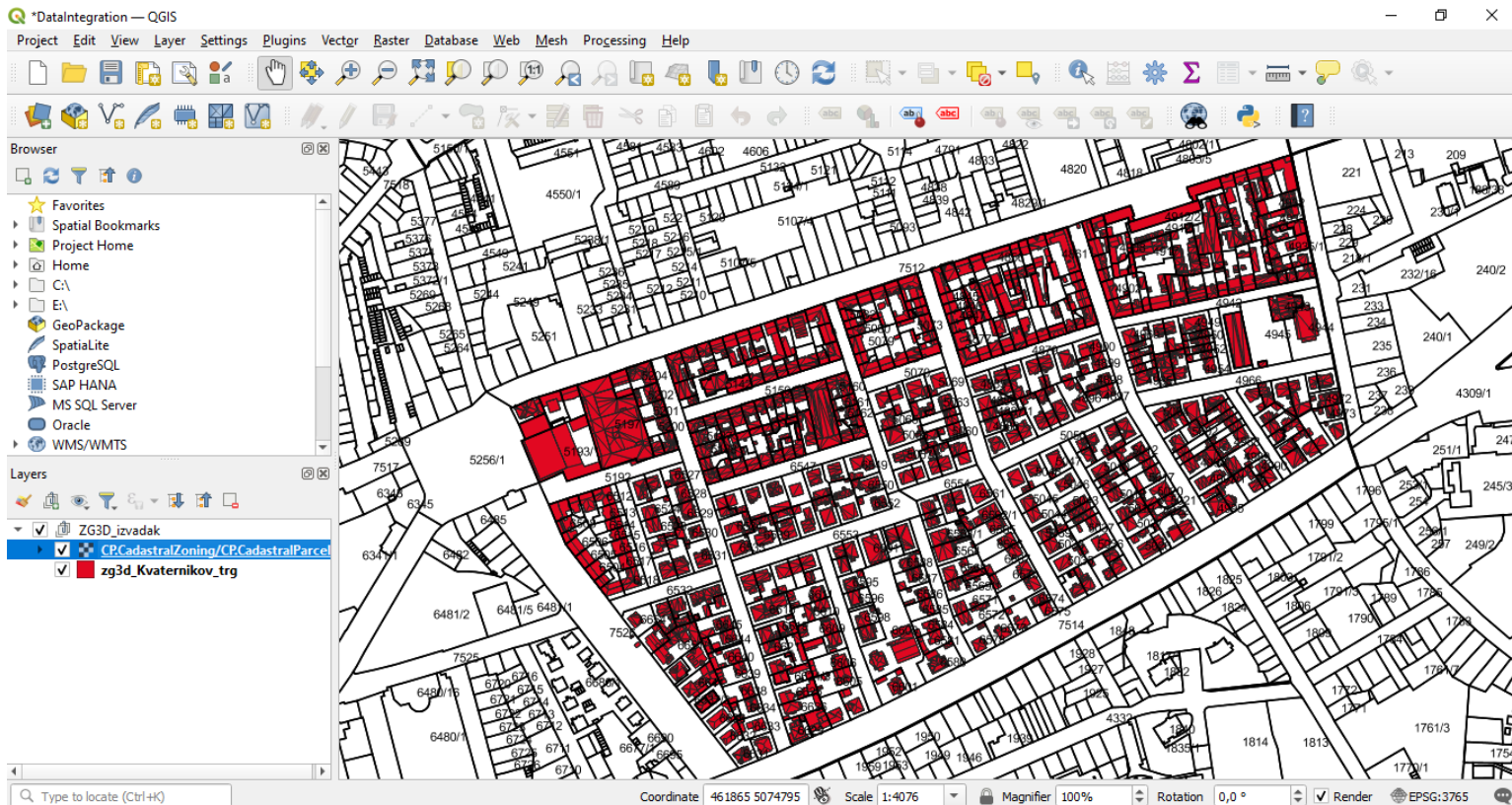
- Integración de datos (QGIS)



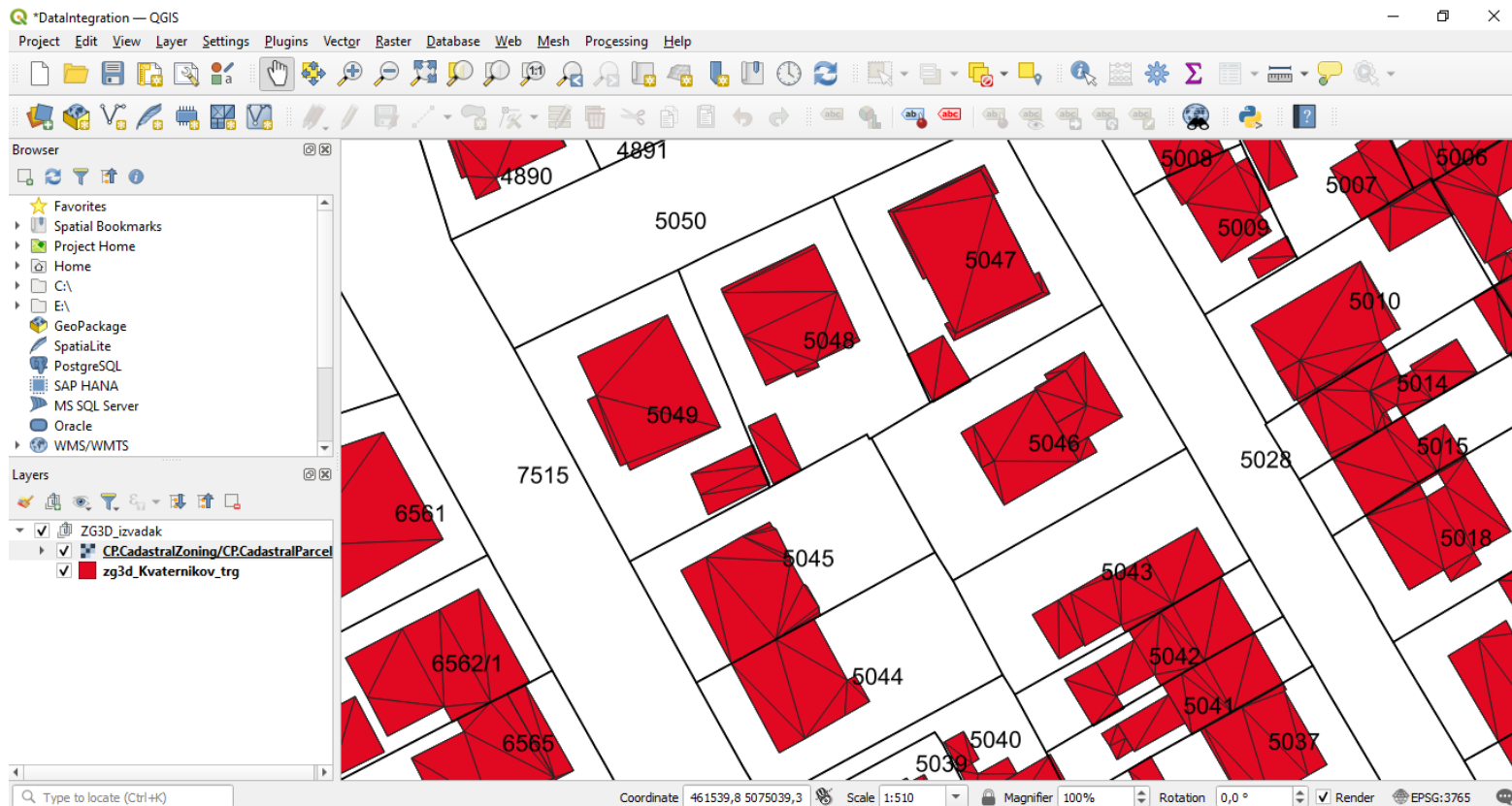
- Integración de datos (QGIS)



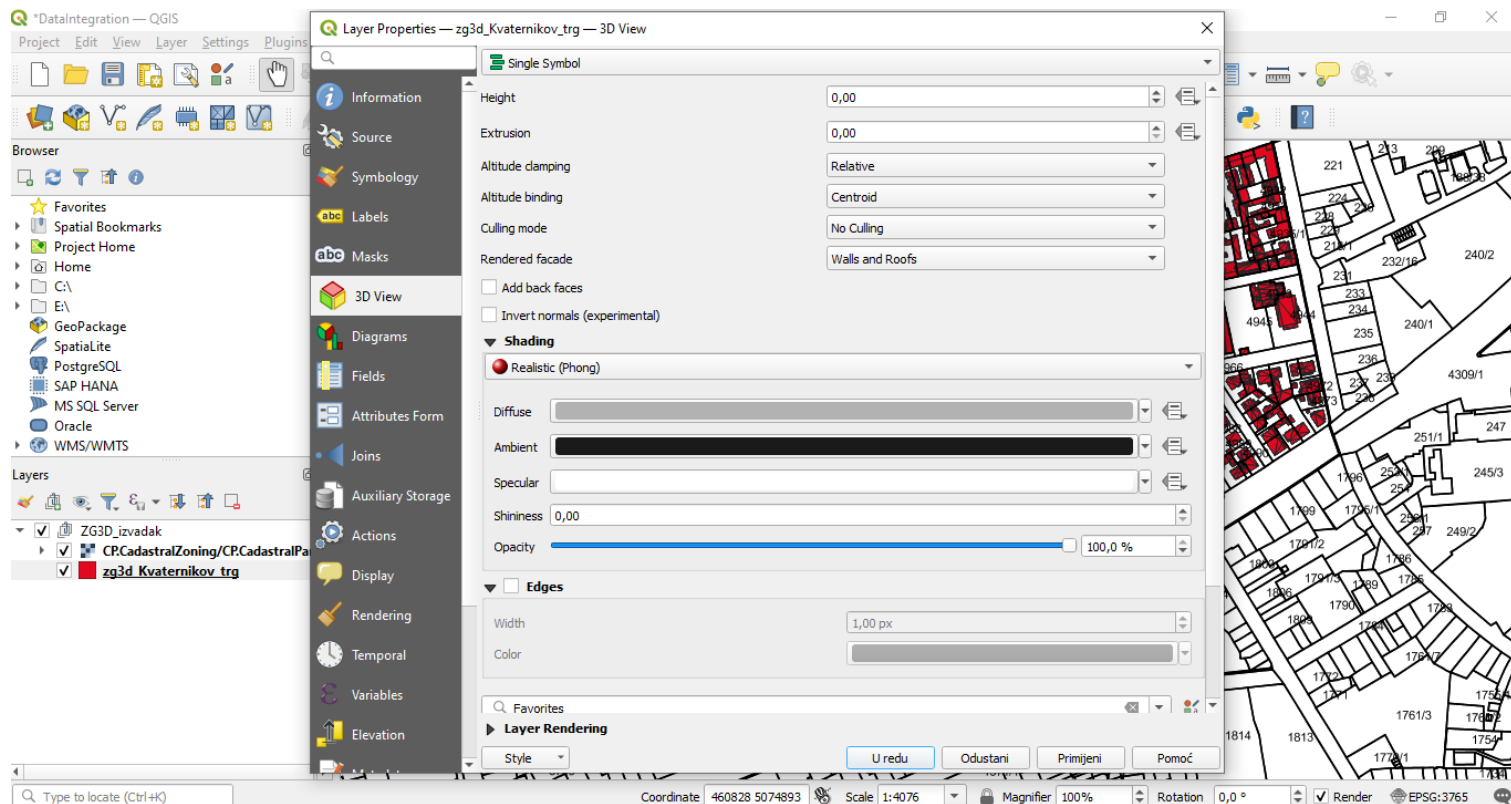
- Integración de datos (QGIS)



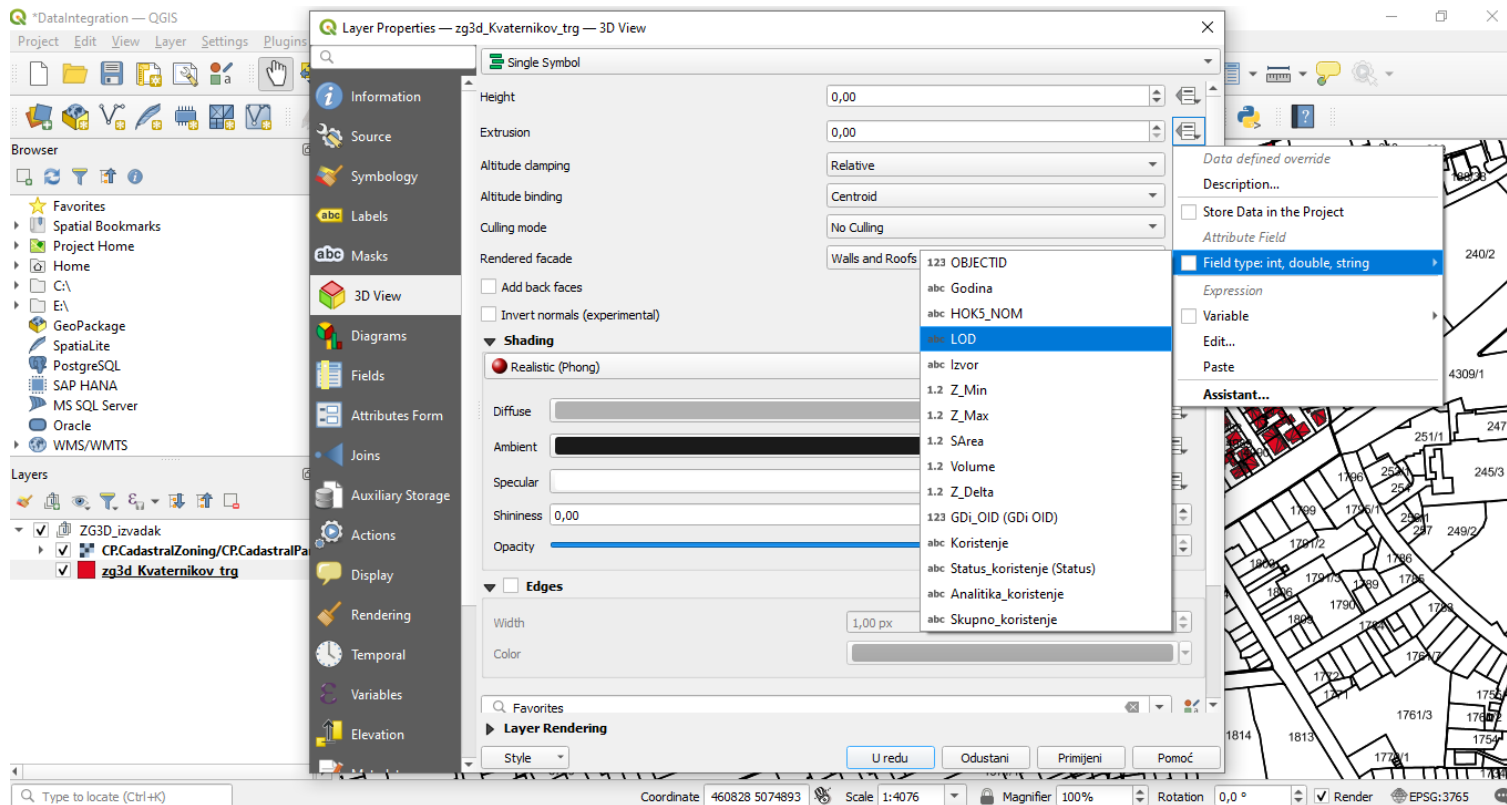
- Integración de datos (QGIS)



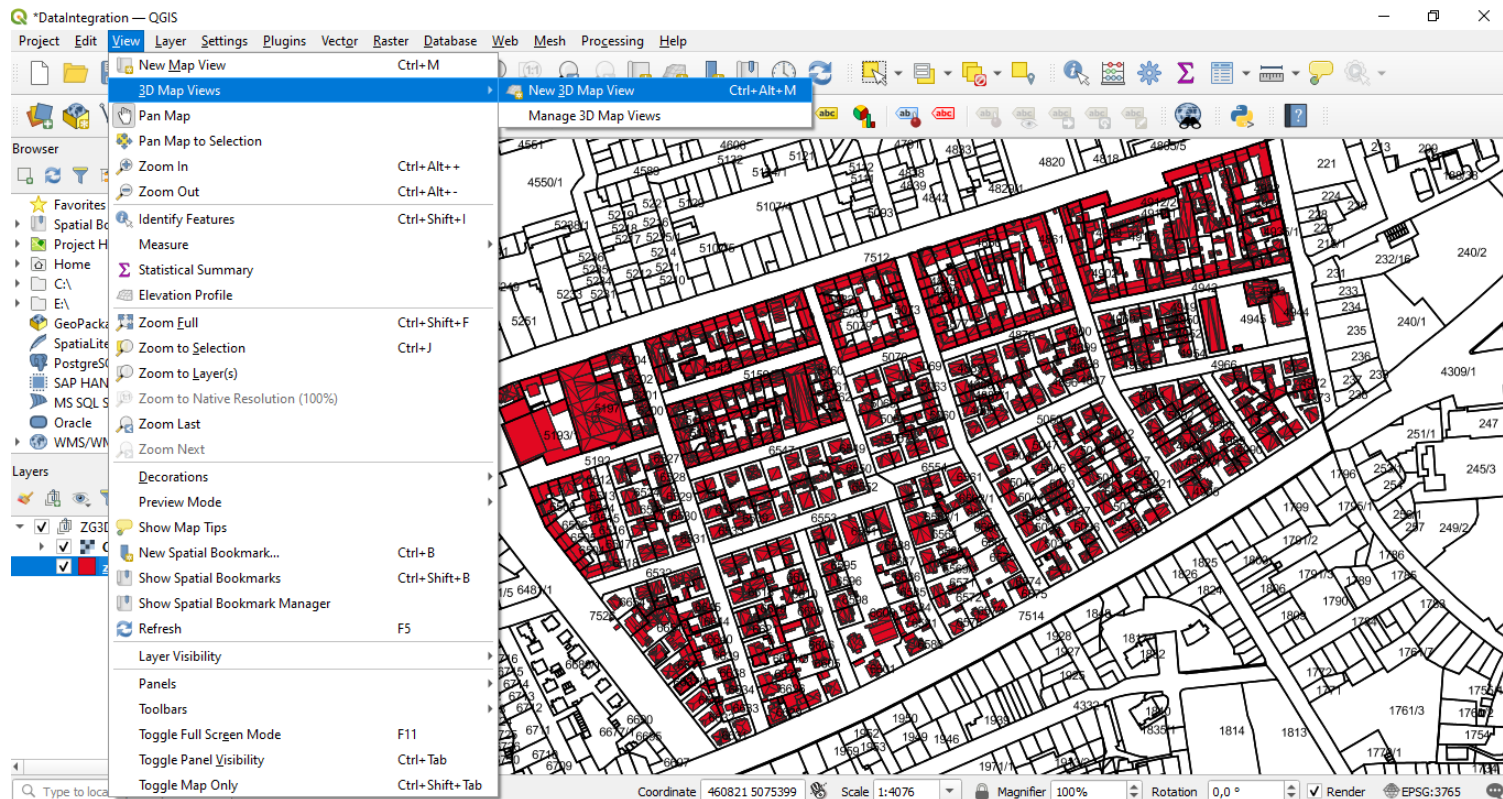
- Integración de datos (QGIS)



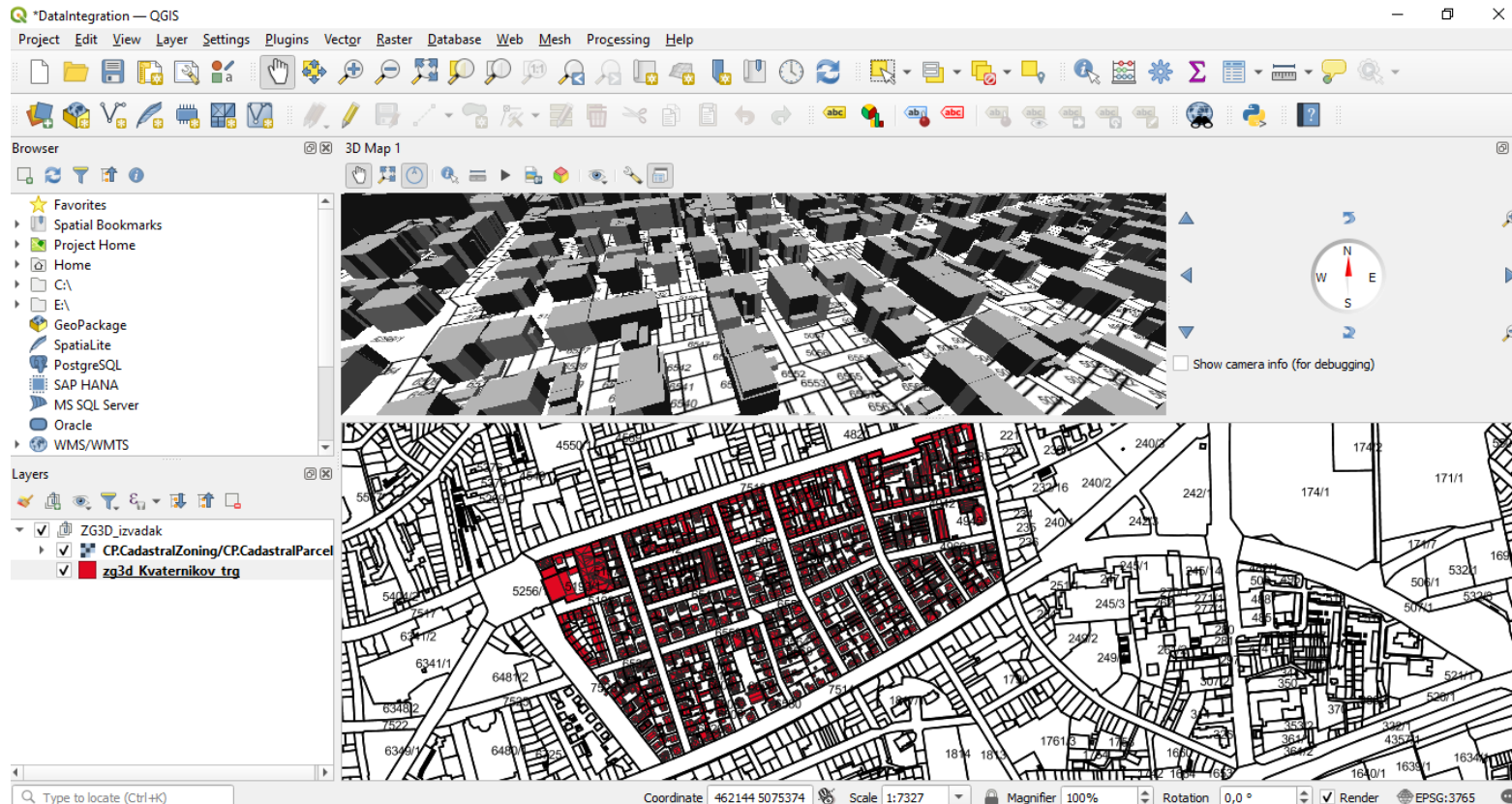
- Integración de datos (QGIS)



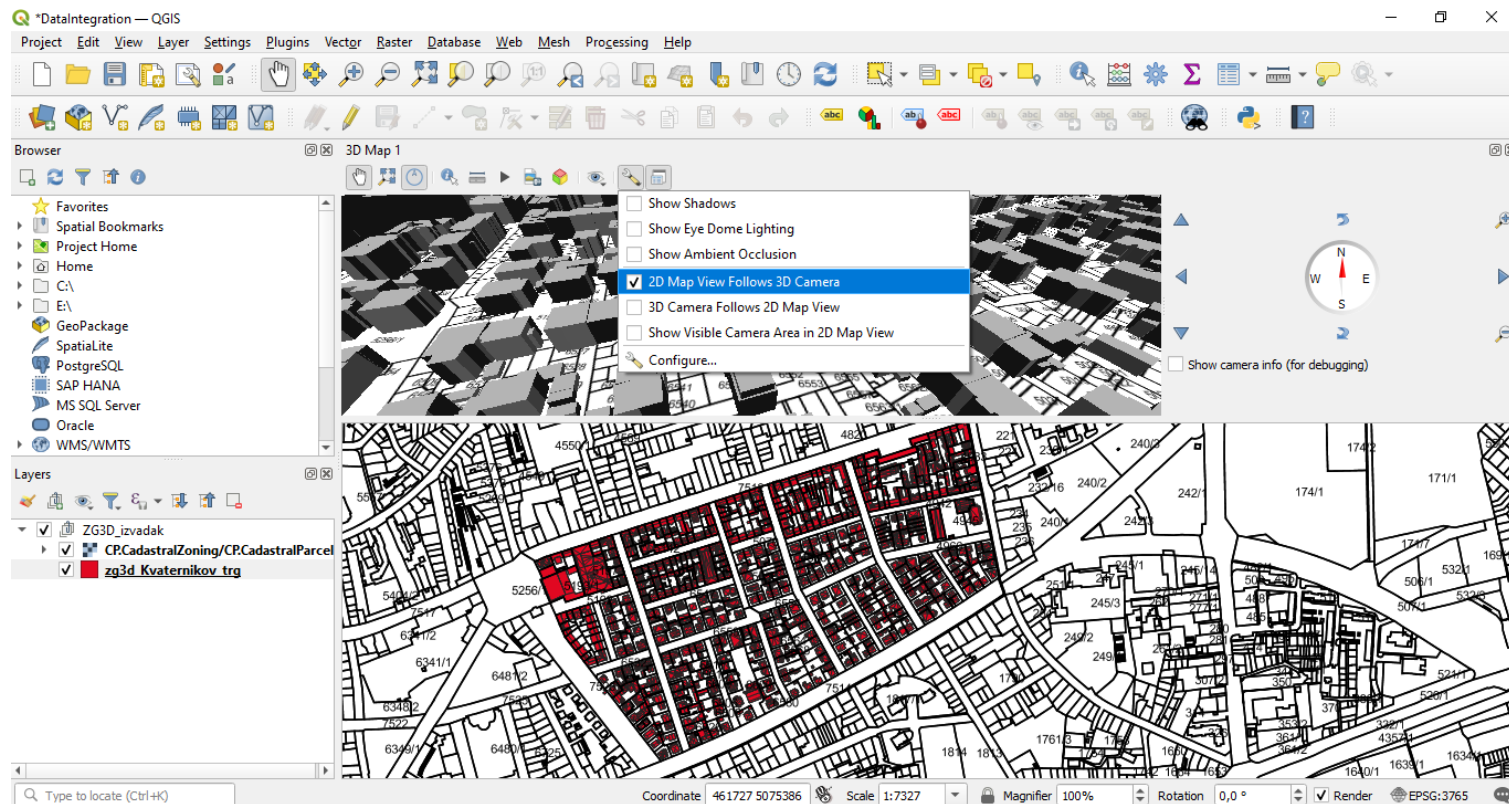
- Integración de datos (QGIS)



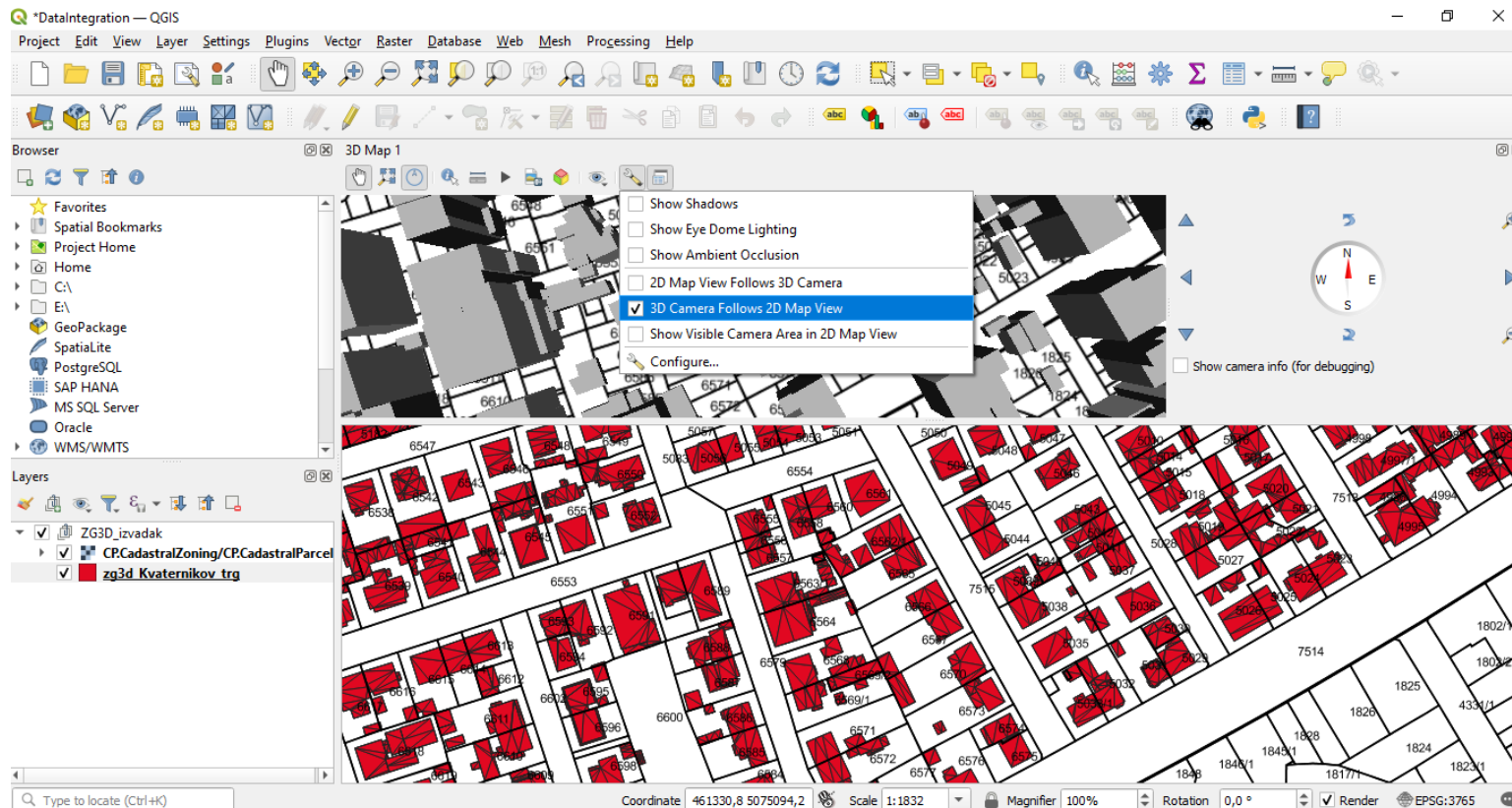
- Integración de datos (QGIS)



- Integración de datos (QGIS)



- Integración de datos (QGIS)



- <https://inspire-geoportal.ec.europa.eu/srv/eng/catalog.search#/home>
- <https://qgis.org/en/site/>
- https://www.mdpi.com/2072-4292/7/6/6710https://arheologijaslovenija.blogspot.com/p/blog-page_81.html

Gracias por su atención



<https://birgitproject.eu/>

Financiado por la Unión Europea. Las opiniones y puntos de vista expresados solo comprometen a su(s) autor(es) y no reflejan necesariamente los de la Unión Europea o los de la Agencia Ejecutiva Europea de Educación y Cultura (EACEA). Ni la Unión Europea ni la EACEA pueden ser considerados responsables de ellos.